



Validrone™ Professional

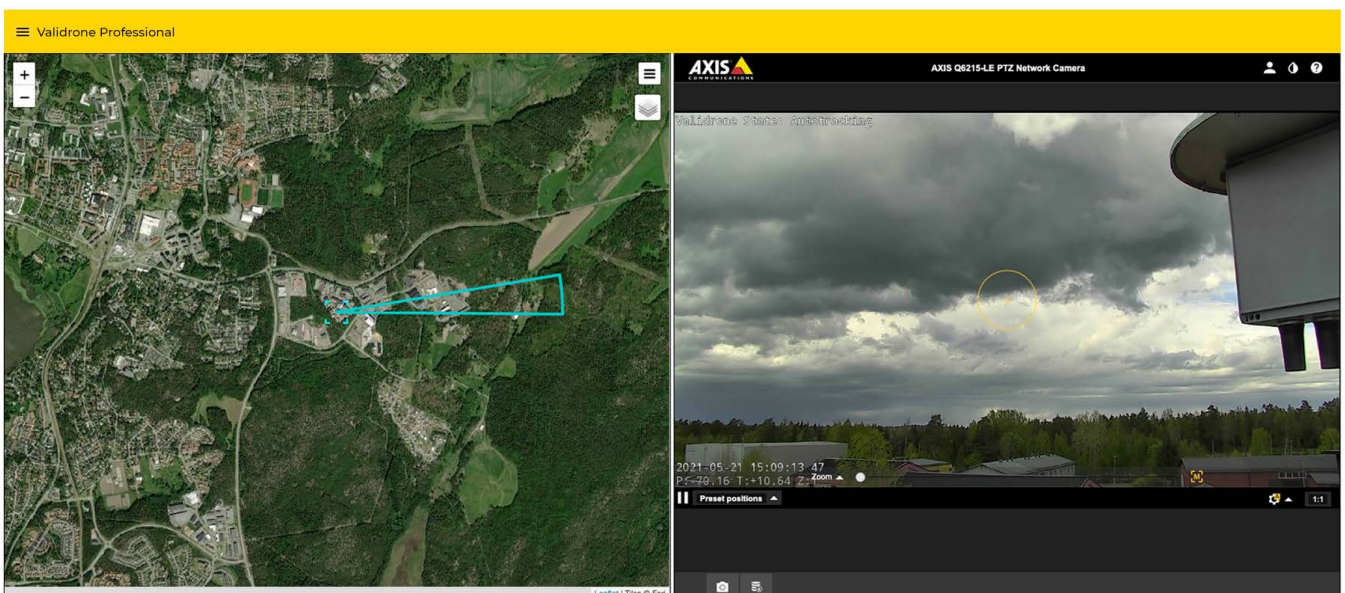
Validrone™ Professional with integrated high-end PTZ camera enables your security team to visually verify the existence of a drone up to 1000 meters away. Together they become a powerful yet cost-efficient airspace surveillance solution for drone detection, direction and verification. The solution is ideal for small to medium-sized perimeters such as corporate buildings, factories, data centers and smaller prisons.

Technology

Validrone™ Professional uses passive RF sensors to determine the direction of drones. The direct integration with PTZ camera enables slew-to-cue on the aerial target. Automatic positioning of the PTZ camera lowers the response time for threat verification allowing your security team to visually verify the existence of a drone up to 1,000 meters away.

Quick deployment and easy to use

Sensors are mounted on a single pole on the rooftop, with the PTZ camera mounted to a second pole a few meters away. The tailor-made enclosure contains the LTE-modem and the PoE-switch – the entire installation can be completed in a few hours. When a drone appears on the screen, the user may take manual control of the PTZ camera to fine-tune the zoom and initiate appropriate counter-measures.



Specification

General

Drone Detection Range	Up to 3 kilometers (1.9 miles)
Radio Frequency	Omnidirectional, passive, at 2.4/5.8 GHz
Optical Verification Range	Up to 1 kilometer
Connectivity	Global LTE-modern supporting all bands
VMS integration	ONVIF (optional)

Electrical

Input Voltage	100-240VAC/50-60 Hz, Universal Input
Power Consumption	90W typical (excluding PTZ camera)

Physical & Environmental

Weight	26 kilogram
Operating Temperature Range	-25°C – +70°C

Compliance

CE	RED, RoHs, REACH, WEEE
FCC	47 CFR Part 1
Ingress Protection	IP 67/EN 6052

Validrone™ Professional includes:

- Hardware, software, installation & system configuration
- System Service Assurance – if ever a device stops responding, an alarm will alert STANLEY Security
- Software upgrades and annual on-site maintenance
- Service & maintenance according to selected Service Level Agreement

Contact us

Email: kundesenter@sbdinc.com

Telephone: +47 987 05 010

Visit our website:

www.stanleysecurity.no